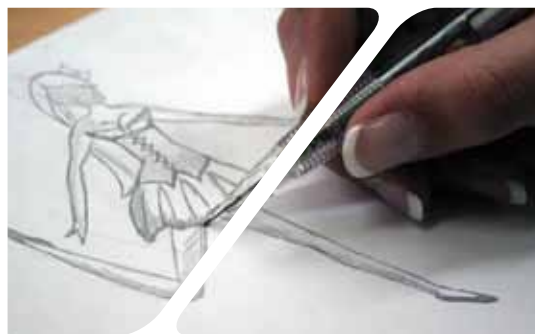


2010 - 2011



# CAREER PROGRAM CONCENTRATIONS & PATHWAYS

CAREER / TECHNICAL / AGRICULTURE EDUCATION



CHALLENGE

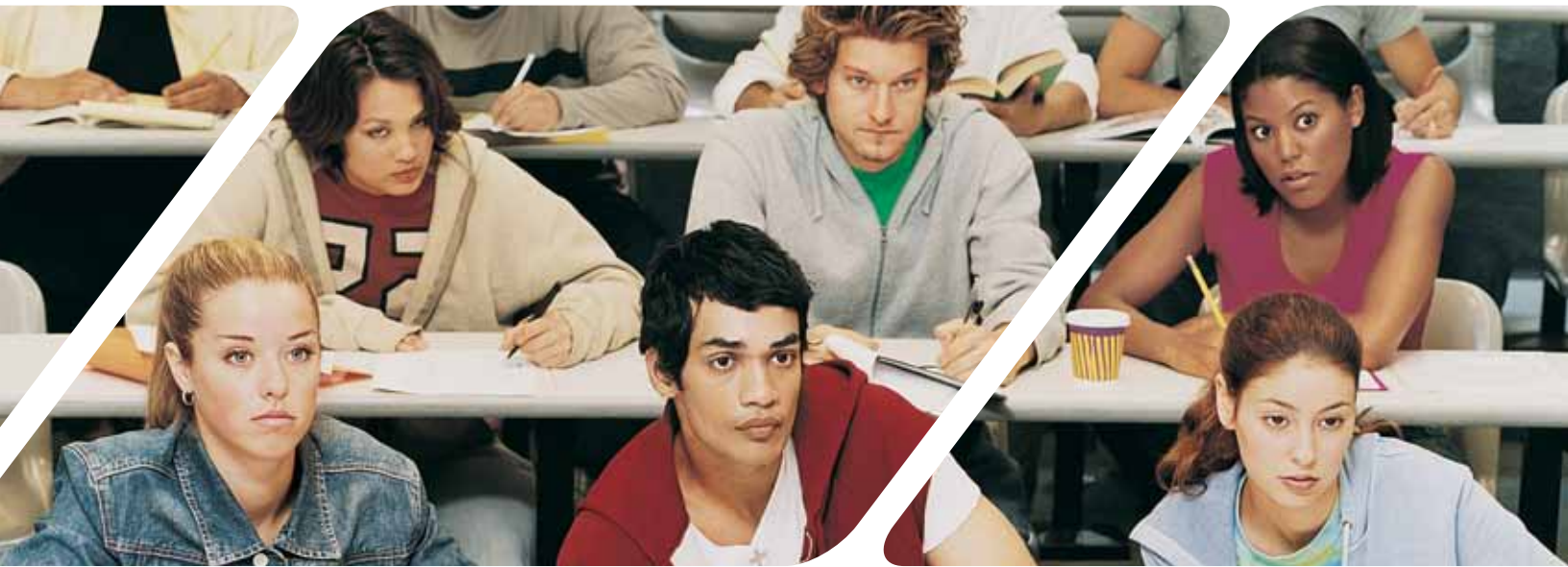
EASTSIDE

SHARP

ALCOVY

NEWTON





## CHOOSING YOUR CAREER PATHWAY

**“GEAR UP AND PREPARE YOURSELF FOR WHAT WILL BE THE MOST EXCITING TIME OF YOUR LIFE.”**

Dear Student,

It is my honor to congratulate you in taking the next step toward your future – Choosing your Career Pathway. It is time for you to take a brief look at the many exciting opportunities that lie ahead of you as it relates to your future career. Your success will depend on you becoming actively engaged in a Career Pathway that supports your passion in life. You have the opportunity, through this publication to look beyond the normal careers that you encounter. Whether you are an upcoming ninth grader or you have already begun your high school career, you are at a prime point to enter into some exciting career options.

Please take a careful look at the various Career Pathways discussed in the accompanying Career Concentrations publication. Begin to imagine yourself in the many exciting career options highlighted. Review the beginning salary and the demand for many of these careers. Then, begin aligning your high school education and career plan to help prepare you to excel in the career areas. The remainder of this publication will outline which high school offers your identified pathway. Though the high school you attend may not offer all pathways, you will be able to find a closely related pathway. In future years, we will be expanding our offerings to provide you with multiple career pathway offerings.

We are focused on preparing you to meet the requirements of local business and industry at the end of your high school career. Gear up and prepare yourself for what will be the most exciting time of your life.

Sincerely,

  
Steve Whatley

- Q: How does my career pathway choice align with the “future” career academy?
- A: The Newton College and Career Academy will begin offering programs in the near future that will enhance courses offered at each of the three high schools in Newton County. Pathways will be offered that will allow students to earn various credentials related to specialized programs supported by local business/industry. Courses taken at each high school will align to the advanced courses at the career academy.
- Q: How does my career pathway choice connect with my opportunity to be involved in internships when I am a junior or senior?
- A: Career Related experiences(Work Based Learning, Internships, Apprenticeships) are provided to seniors and some juniors based on several factors. One such factor is your identified career pathway. Many employers select students who have an identified pathway in the area of work they will be performing. Identifying and completing an identified career pathway will give you a value added edge on other students interested in the same internship/apprenticeship experience. Internships/apprenticeships add value to your overall portfolio of experiences and provide that ‘first work experience’ to begin building your resume?

# CAREER PROGRAM

## CONCENTRATIONS & PATHWAYS

**A**LCOVY HIGH SCHOOL  
**B**ASTSIDE HIGH SCHOOL  
**N**EWTON HIGH SCHOOL  
**S**HARP LEARNING CENTER  
**C**HALLENGE CHARTER

### AGRICULTURE

<b>Agriscience Pathway</b>	<b>A E N</b>
02.47100 Basic Agricultural Science and Technology	
02.42100 Animal Science Technology/Biotechnology	
02.44100 Plant Science and Biotechnology	
<b>Plant Science/Horticulture Pathway</b>	<b>A E N</b>
02.47100 Basic Agricultural Science and Technology	
01.46100 General Horticulture and Plant Science	
01.47000 Nursery and Landscape	
<b>Forestry/Natural Resources Pathway</b>	<b>A N</b>
02.47100 Basic Agricultural Science and Technology	
03.45100 Forest Science	
03.45300 Wildlife Management	
<b>Animal Science Pathway</b>	<b>N</b>
02.47100 Basic Agricultural Science and Technology	
02.42100 Animal Science Technology/Biotechnology	
01.43200 Agricultural Animal Production & Management	

### ARCHITECTURE, CONSTRUCTION, COMMUNICATIONS & TRANSPORTATION

<b>Broadcast/Video Production Pathway</b>	<b>A</b>
10.51110 Broadcast/Video Production I	
10.51210 Broadcast/Video Production II	
10.51310 Broadcast/Video Production III	
<b>Graphic Design Pathway</b>	<b>E</b>
48.56100 Introduction to Graphics and Design	
48.56200 Graphic Design and Production	
48.52800 Advanced Graphic Design	
<b>Graphic Communications Pathway</b>	<b>E</b>
48.56100 Introduction to Graphics and Design	
48.56200 Graphic Design and Production	
48.56900 Graphic Output Processes	
<b>Construction Pathway</b>	<b>A</b>
46.54500 Occupational Safety and Fundamentals	
46.54600 Introduction to Construction	
AND	
46.55000 Carpentry I	46.55100 Carpentry II
OR	
46.56000 Electrical I	46.56100 Electrical II
OR	
46.57000 Masonry I	46.57100 Masonry II
OR	
46.58000 Plumbing I	46.58100 Plumbing II
46.54700 Construction Internship	

### BUSINESS & COMPUTER SCIENCE

<b>Small Business Development Pathway</b>	<b>A E N S C</b>
06.41600 Business Essentials	
06.41500 Legal Environment of Business	
06.41700 Entrepreneurial Ventures	
<b>Financial Management-Services - Pathway</b>	<b>E</b>
06.41600 Business Essentials	
07.42110 Banking and Investing	
07.42300 Insurance and Risk Management	
<b>Financial Management-Accounting Pathway</b>	<b>E N</b>
06.41600 Business Essentials	
07.41100 Principles of Accounting I	
07.41200 Principles of Accounting II	

<b>Interactive Media Pathway</b>	<b>A E N</b>
11.41300 Computing in the Modern World	
11.43100 Fundamentals of Web Design	
11.43200 Advanced Web Design	
<b>Computer Networking Pathway</b>	<b>N</b>
11.41400 Information Technology Essentials	
11.42000 Information Technology Support	
11.42200 Networking Systems	
<b>Computer Systems &amp; Support Pathway</b>	<b>N</b>
11.41300 Computing in the Modern World	
11.41400 Information Technology Essentials	
11.42000 Information Technology Support	
<b>Administrative/ Information Support Pathway</b>	<b>A E N S</b>
07.44110 Computer Applications 1	
07.44120 Computer Applications 2	
07.48310 Business Communication and Presentation	

### CULINARY ARTS

<b>Culinary Arts Pathway</b>	<b>A</b>
20.53100 Introduction to Culinary Arts	
20.53210 Culinary Arts I	
20.53310 Culinary Arts II	

### EDUCATION

<b>Early Childhood Education Pathway</b>	<b>E N</b>
20.52510 Introduction to Early Childhood Care and Education	
20.42320 Human Growth & Development for Early Childhood	
20.52610 Health, Safety & Nutrition for the Young Child	
20.52710 Early Childhood Education Internship	
<b>Teaching As A Profession Pathway</b>	<b>A E N</b>
13.01100 Examining the Teaching Profession	
13.01200 Contemporary Issues in Education	
13.52100 Teaching as a Profession Internship	

### ENGINEERING & TECHNOLOGY

<b>Engineering Pathway</b>	<b>E</b>
21.42500 Foundations of Engineering and Technology	
21.47100 Engineering Concepts	
21.47200 Engineering Applications	
21.46800 Engineering Internship	
<b>Engineering Graphics &amp; Design Pathway</b>	<b>A</b>
48.54100 Intro to Engineering Drawing & Design	
48.54200 Survey of Engineering Graphics	
48.54300 3D Modeling and Analysis	
<b>Manufacturing Pathway</b>	<b>A E</b>
21.44100 Foundations of Manufacturing and Materials Science	
21.44500 Robotics and Automated Systems	
21.44400 Production Enterprises	
21.45800 Manufacturing Internship	

### FAMILY & CONSUMER SCIENCES

<b>Nutrition &amp; Food Science Pathway</b>	<b>E N C</b>
20.41610 Food, Nutrition & Wellness	
20.41710 Food & Nutrition Through the Lifespan	
20.41810 Food Science	

*Continued on back.*

<b>Consumer Services Pathway</b>		N
20.45100	Consumer Awareness	
20.45200	Consumer Skills	
20.43000	Consumer Finance	

<b>Interior Design Pathway</b>		N
20.44100	Foundations of Interior Design	
20.44200	Interior Design Furnishings, Materials and Components	
20.44700	Textile Science	

**GOVERNMENT & PUBLIC SAFETY**

<b>Law &amp; Justice Pathway - Dual Enrollment</b>		A N
43.43000	Introduction to Law & Justice	
43.43500	Law, Community Response & Policing	
43.43300	Criminal Investigation & Forensics	
43.43400	Law & Justice Internship	

<b>JROTC – Marines</b>		N
------------------------	--	---

**HEALTHCARE SCIENCE**

<b>Therapeutic Services-Nursing Pathway</b>		A N
25.52100	Introduction to Healthcare Science	
25.52200	Application of Therapeutic Services	
25.56100	Nursing Essentials	
25.56300	Nursing Internship	

**MARKETING, SALES & SERVICES**

<b>Marketing &amp; Management Pathway</b>		E N
08.47400	Marketing Principles	
08.43600	Entrepreneurship: Building a Business	
08.47500	Advanced Marketing	

<b>Marketing Communications &amp; Promotion Pathway</b>		E N
08.47400	Marketing Principles	
08.47200	Professional Sales and Promotion	
08.47900	E-Marketing	

<b>Sports and Entertainment Marketing Pathway</b>		N
08.47400	Marketing Principles	
08.47800	Introduction to Sports and Entertainment Marketing	
08.48500	Advanced Sports and Entertainment Marketing	

**PERFORMING & VISUAL ARTS**

<b>Drama/Theater</b>		A E N
52.02200	Dramatic Arts/Fundamentals I	
52.03100	Dramatic Arts/Fundamentals II	
52.05100	Dramatic Arts/Technical Theater I	
52.06200	Dramatic Arts/Acting I	

<b>Music – Band &amp; Chorus</b>		A E N
53.02300	Music Appreciation	
54.02120	Beginning Chorus	
54.02320	Advanced Chorus (by audition)	
53.03620	Beginning Band	
53.03720	Intermediate Band	
53.03820	Advanced Band	

<b>Visual Arts</b>		A E N
50.02120	Visual Arts/ Comprehensive I	
50.03110	Visual Arts /Comprehensive II	
50.03120	Visual Arts /Drawing I	
50.03220	Visual Arts /Painting I	
50.04120	Visual Arts /Ceramics/Pottery I	
50.08120	AP Studio Arts Drawing Portfolio	

Federal law prohibits discrimination on the basis of race, color, or national origin (Title VI of the Civil Rights Act of 1964), sex (Title IX of the Educational Amendments of 1972 and Title II of the Carl D. Perkins Vocational Education Act of 1984); or handicap (Section 504 of Rehabilitation Act of 1973) in educational programs or activities receiving federal financial assistance. Students, parents, employees and the general public are hereby notified that the Newton County Board of Education does not discriminate in any education, programs, activities including sports, or in employment policies.

The following individuals have been designated as the employees responsible for coordinating the district's effort to implement this nondiscriminatory policy: Title II: Director of Professional Learning; Section 504, ADA and Title VI: Director of Special Education; Title IX and Equity in Sports: Director of Federal Programs. Inquiries concerning the application of Title II, Title VI, Title IX, Section 504, or Equity in Sports to the policies and practices of the district may be addressed to person listed above; to the Georgia Department of Education, Twin Towers East, Atlanta, GA 30334; to the Regional Office for Civil Rights, Atlanta, GA 30323; or the Director, Office of the Civil Rights, Education Department, Washington, D.C. 20201.



**NEWTON COUNTY SCHOOLS**

[www.newtoncountyschools.org/departments/career-pathways.asp](http://www.newtoncountyschools.org/departments/career-pathways.asp)  
 2109 Newton Drive NE, Covington, GA 30014  
 770-787-1330